

AGENDA

COMMITTEE ON PUBLIC SAFETY, HEALTH AND TRAFFIC

February 19, 2008
Aldermen Shea, O'Neil,
Sullivan, J. Roy, Ouellette

5:00 PM
Aldermanic Chambers
City Hall (3rd Floor)

1. Chairman Shea calls the meeting to order.
2. The Clerk calls the roll.
3. Communication from Sara Anderson of Rock 101/WGIR 610, requesting to use Arms Park for the 17th Annual Rock 101 Sky Show on May 25, 2008 with set up to commence on May 24, 2008.
Gentlemen, what is your pleasure?
4. Communication from Mitch Sawaya, owner of the Strange Brew Tavern at 88 Market Street, requesting that he be allowed to temporarily close a portion of Franklin West Back Street each week from Thursday through Saturday between the hours of 5:00 p.m. and 11:00 p.m.
Gentlemen, what is your pleasure?
5. Chairman Shea advises the Traffic Division has submitted an agenda which needs to be addressed:

**NO PARKING DURING SCHOOL HOURS – EMERGENCY
ORDINANCE:**

On Rockwell Street, east side, from Celeste Street to Tilden Drive
Alderman DeVries

NO PARKING DURING SCHOOL HOURS:

On Rockwell Street, west side, from Fernand Street to Celeste Street
Alderman DeVries

SIGNAGE – “CAUTION ELDERLY CROSSING AHEAD”

On Tarrytown Road, north and south of Auburn Street
Alderman Osborne

CROSSWALK:

On Ferry Street, east of Fourth Street
Alderman Smith

RESCIND NO PARKING ANYTIME:

On Cleveland Street, north side, from Second Street to Hiran Street (Ord. 2850)
Alderman Smith

NO PARKING ANYTIME:

On Cleveland Street, north side, from Second Street easterly to the dead end.
Alderman Smith

DO NOT BLOCK INTERSECTION:

Brown Ave., east, side at Connecting Road – post mount
Brown Ave., at South Beech Street, north bound – post-mount
Brown Ave., at South Beech Street, south bound – post-mount
Granite Street at Canal Street, west bound – mast-arm mount
Hanover Street at Tarrytown Road, east bound – post mount
Mammoth Road at Lake Ave., east bound – mast-arm mount
Mammoth Road and Massabesic Street, east bound – post-mount
Mammoth Road and Massabesic Street, north bound – post-mount
South Willow Street at Gold Street, southbound – post-mount
Weston Road, west of Huse Road at Kara Street – post-mount
Weston Road, north side, east of Andrea Drive – post-mount

Gentlemen, what is your pleasure?

TABLED ITEMS

A motion is in order to remove any item from the table.

6. Communication from Alderman Shea proposing the establishment of a Manchester Crime Prevention Committee.
(Tabled 12/12/2006)
7. Report from Police and City Solicitor regarding commercial vehicle definitions, if available.
(Tabled 12/04/2007)
(Note: Response from Deputy Public Works Director enclosed.)
8. Ordinance amendment relating to restrictions on registered sex offenders.
(Tabled 09/04/2007 – pending further research by the City Solicitor office; re-tabled 12/04/2007.)
Note: All information previously forwarded to Mayor and Aldermen and on file at the Office of the City Clerk.
9. If there is no further business, a motion is in order to adjourn.

January 25, 2008

Mr. Matt Normand
Office of the City Clerk
One City Hall Plaza
Manchester, NH 03101

Dear Matt:

Please consider this letter as our official request for the use of Arms Park for the 17th Annual Rock 101 Sky Show, held Sunday, May 25th - Memorial Day weekend!

Rock 101 WGIR FM formally requests the Mayor and the City Aldermen permission to set up Saturday, May 24th, the use of Arms Park and the Notre Dame Bridge on Sunday, May 25th 2008 for the day of the event - with a rain date of Memorial Day itself, Monday, May 26th 2008 if necessary.

Sky show has been a staple event in WGIR's history and will follow the tradition as a free event for the people of Manchester and surrounding area's. The park would be open to the public at 1p with Musical entertainment beginning at 3p concluding with the traditional Fireworks display around 9:20. The fireworks is approximately 25 to 30 minutes long ending our event/ day before 10p.

We fully understand that all costs for the Rock 101 Sky Show is the sole responsibility of Rock 101 /Clear Channel Manchester and their underwriting sponsors. We understand fully the permit requirements, the city department heads we must work with as well as the neighbors in the Arms Park Area.

Thank you in advance for the support of your office and that of the Mayor and the Board of Aldermen of the City of Manchester.

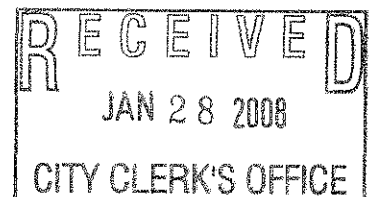
Sincerely,



Sara Anderson

Director of Sponsorship and Morning Buzz Sale Manager
Clear Channel Manchester - Rock 101 and WGIR AM 610
195 McGregor St Suite 810
Manchester, NH 03102
saraanderson@clearchannel.com
603-518-1945

3



STRANGE BREW TAVERN

88 Market Street
Manchester, NH 03101

January 22, 2008

City of Manchester, NH
Office of the City Clerk
Attn: Matthew Normand
Deputy Clerk

Re: Encumbrance Permit

Dear Sir:

As per our October discussion, I am requesting permission to close the alley adjacent to Strange Brew known as Franklin West Back Street.

The area in question is 84'3" long (from one end of the building to the other) by 23'6" wide on the Market Street side.

The initial proposed closure times would be Thursday through Saturday from approximately 5pm until a last call for drinks at 10pm. All service would be discontinued in the alley by 11pm. We are picking these times for the initial test of this proposal because we always hire a detail Thursday, Friday, and Saturday. If this works out, I will ask that we reevaluate and close the alley for additional days (in particular, all day Sunday and Saturday).

The Heritage Commission has given conceptual approval for an awning 35 feet in length with an overhang of 10 feet 6 inches. This is a retractable awning which would only be open during hours of operation. During whatever review we have of the alley closure, I suggest we discuss "air rights" for the awning. Once air rights are approved, the building department will issue a permit.

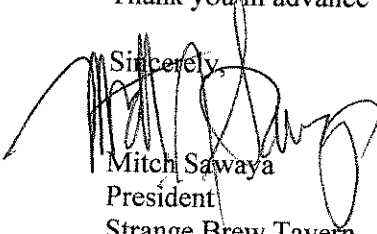
As we discussed, we will not close the alley during snow emergencies.

For the short term, I intend to purchase nylon rope barriers which we will wrap in white lights. If the program works out with no issues, I will look to put in a more permanent barrier, such as a wrought iron divider that swings out from the wall.

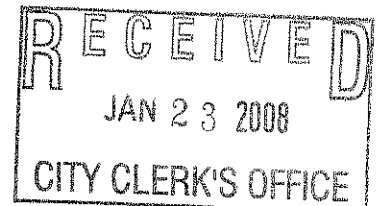
Please let me know if you have any further questions regarding this request. I can be reached in my office most days at (603)666-0293, or on my cell at (603) 670-3236.

Thank you in advance for your assistance in this matter.

Sincerely,


Mitch Sawaya
President
Strange Brew Tavern

4



AGENDA – FEBRUARY 19, 2008

COMMITTEE ON PUBLIC SAFETY, HEALTH AND TRAFFIC

NO PARKING DURING SCHOOL HOURS – EMERGENCY ORDINANCE:

On Rockwell Street, east side, from Celeste Street to Tilden Drive
Alderman DeVries

NO PARKING DURING SCHOOL HOURS:

On Rockwell Street, west side, from Fernand Street to Celeste Street
Alderman DeVries

SIGNAGE – “CAUTION ELDERLY CROSSING AHEAD”

On Tarrytown Road, north and south of Auburn Street
Alderman Osborne

CROSSWALK:

On Ferry Street, east of Fourth Street
Alderman Smith

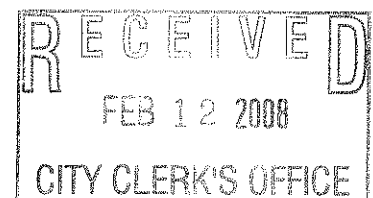
RESCIND NO PARKING ANYTIME:

On Cleveland Street, north side, from Second Street to Hiran Street (Ord. 2850)
Alderman Smith

NO PARKING ANYTIME:

On Cleveland Street, north side, from Second Street easterly to the dead end.
Alderman Smith

5

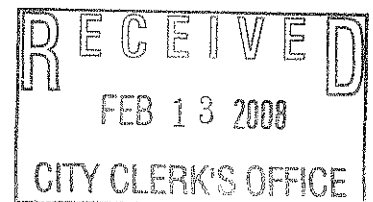


11 SIGN LOCATIONS

“DO NOT BLOCK INTERSECTION”

Brown Ave., east, side at Connecting Road – post mount
Brown Ave., at South Beech Street, north bound – post-mount
Brown Ave., at South Beech Street, south bound – post-mount
Granite Street at Canal Street, west bound – mast-arm mount
Hanover Street at Tarrytown Road, east bound – post mount
Mammoth Road at Lake Ave., east bound – mast-arm mount
Mammoth Road and Massabesic Street, east bound – post-mount
Mammoth Road and Massabesic Street, north bound – post-mount
South Willow Street at Gold Street, southbound – post-mount
Weston Road, west of Huse Road at Kara Street – post-mount
Weston Road, north side, east of Andrea Drive – post-mount

5





CITY OF MANCHESTER

Board of Aldermen

12-12-06 Tabled
1-15-08 REMAINED TABLED



IN BOARD OF MAYOR & ALDERMEN

DATE: November 28, 2006

ON MOTION OF ALD. Shea

MEMORANDUM

SECONDED BY ALD. Pinard

refer to the Committee on
VOTED TO Public Safety and Traffic.

John Blawie
CITY CLERK

To: Board of Mayor and Aldermen

From: Alderman Shea *M.P.S.*

Date: November 28, 2006

Re: Establishment of a Manchester Crime Prevention Committee

My purpose in proposing the establishment of such a committee would be to examine the causes for increases in serious crimes in Manchester and I am recommending that members of the committee include the following:

- a) Manchester Police Chief (Chairman);
- b) a representative of the NH State Police;
- c) a representative of the Sheriff's Department;
- d) a representative of the Manchester Police Commission;
- e) a representative of the DEA (research purposes);
- f) a representative of the FBI (research purposes);
- g) Chairman of the Board of Aldermen;
- h) a representative of the Office of Youth Services;
- i) a representative of the Mayor's office; and
- j) utilization of local colleges for research purposes.

The committee would be in conjunction with the Mayor's action plan for neighborhood improvements and predicated upon the Manchester Refugee Resettlement Advisory Committee report submitted in May 2006.

Upon conclusion a report would be submitted to the Board of Mayor and Aldermen for their review no later than March 2007.

6

1-15 minutes 7 added



**City of Manchester
Department of Highways**

227 Maple Street
Manchester, New Hampshire 03103-5596
(603) 624-6444 Fax # (603) 624-6487

Commission
Edward J. Beleski
- Chairman
Joan Flurey
William F. Houghton Jr.
Robert R. Rivard
William A. Varkas

Frank C. Thomas, P.E.
Public Works Director

Kevin A. Sheppard, P.E.
Deputy Public Works Director

December 11, 2007

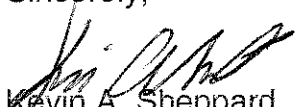
Alderman Ed Osborne, Chmn.
Committee on Public Safety, Health and Traffic
CITY OF MANCHESTER
c/o City Clerk's Office
Manchester, New Hampshire 03101

Re: Commercial Vehicles

Dear Chairman Osborne:

In response to Alderman O'Neil's request for sample vehicle weights, I have attached the definition of a commercial motor vehicle per City Ordinance 70.06 as well as sample weights of various vehicle classes.

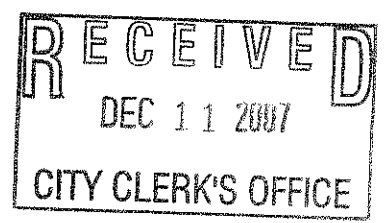
Sincerely,


Kevin A. Sheppard, P.E.
Deputy Public Works Director

/cd

cc: Frank C. Thomas, P.E.
City Solicitor's Office
Lt. Jon Hopkins, MPD

Encl.



7

COMMERCIAL MOTOR VEHICLE

CHAPTER 70: MOTOR VEHICLES AND TRAFFIC

DEFINITION 70.06

COMMERCIAL MOTOR VEHICLE:

A vehicle designed or used to transport passengers or property if:

- (1) The vehicle has a gross vehicle weight rating or gross combination weight rating of 26,001 or more pounds; or
- (2) The vehicle is designed to transport more than 15 passengers including the driver; or
- (3) The vehicle is of any size and is used in the transportation of materials found to be hazardous pursuant to R.S.A. 259:12-3(c); or
- (4) The vehicle is used primarily for business and industry as contrasted with pleasure vehicles.
- (5) Exclusion. COMMERCIAL MOTOR VEHICLE shall not include a city vehicle, or emergency vehicles engaged in the provision of emergency medical, Police or Fire services.

WEIGHT DEFINITIONS

CURB WEIGHT – The weight of a fueled automobile with standard equipment but without cargo or passengers.

GROSS VEHICLE WEIGHT RATING (GVWR) – The maximum allowable total weight of a road vehicle or trailer that is loaded, including the weight of the vehicle itself plus fuel, passengers, cargo, and trailer tongue weight.

Note: Both curb weights and gross vehicle weights vary depending on vehicle model, trim and options. The numbers presented are an average for that vehicle type.

7

FORD FOCUS



**CURB WEIGHT – 2,840 lbs.
GVWR – 3,825 lbs.**

FORD ESCAPE



**CURB WEIGHT – 3,387 lbs.
GVWR – 4,520 lbs.**

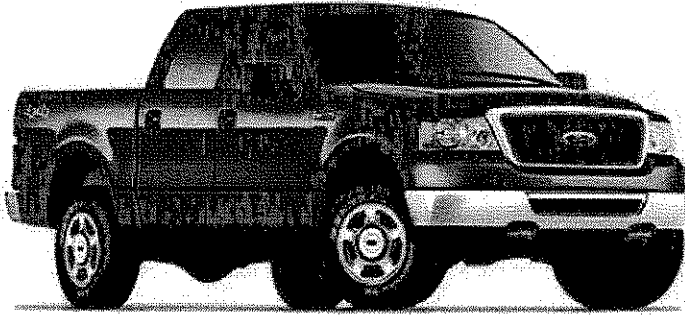
FORD EXPLORER



**CURB WEIGHT – 4,531 lbs.
GVWR – 6,051 lbs.**

FORD F150

7



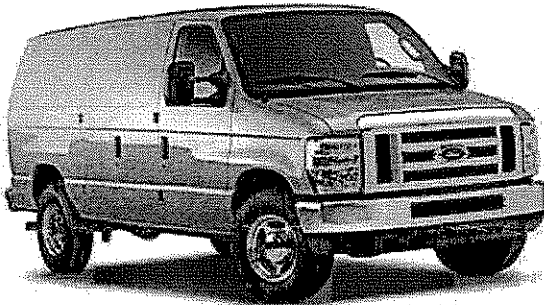
CURB WEIGHT – 4,904 lbs.
GVWR – 6,744 lbs.

FORD F450



CURB WEIGHT – 8,290 lbs.
GVWR – 14,500 lbs.

FORD E-150 VAN



CURB WEIGHT – 5,186 lbs.
GVWR – 14,500

FORD F750 DUMP TRUCK



GVWR – 33,000

2